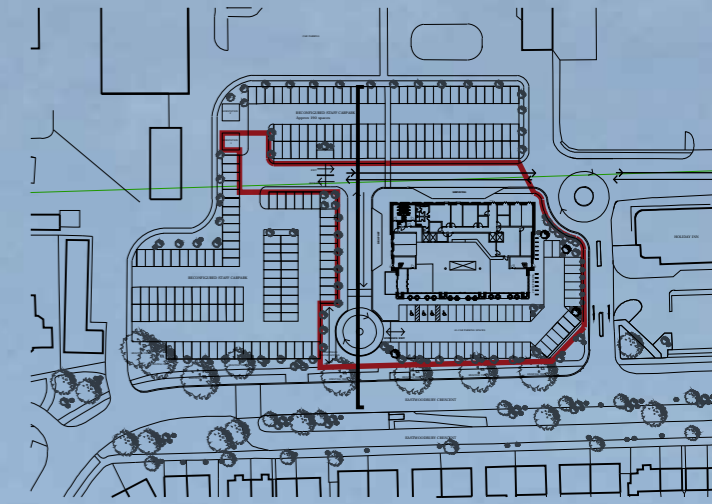


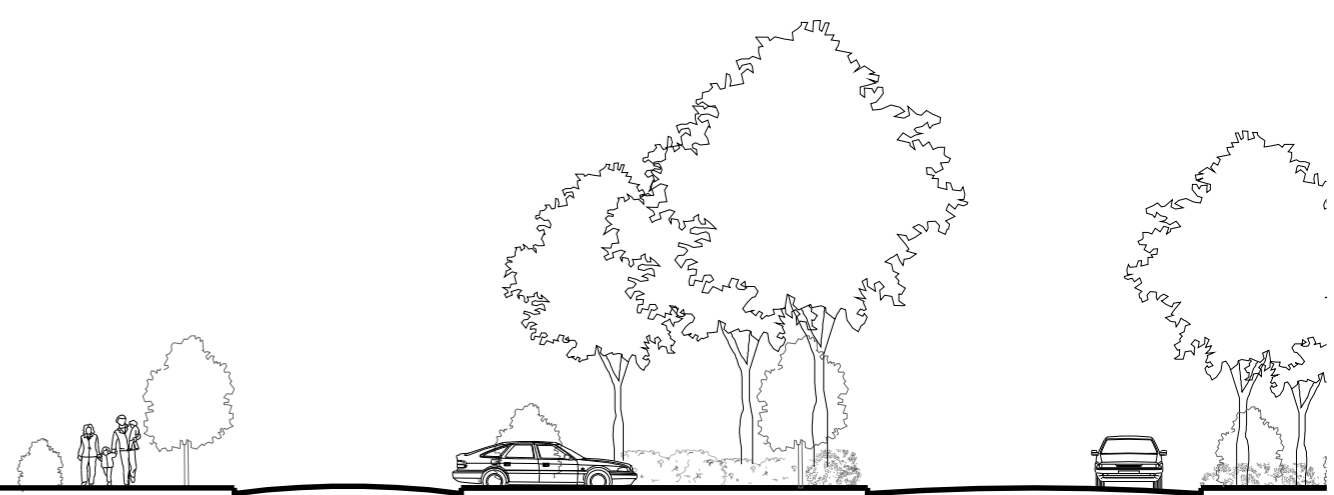
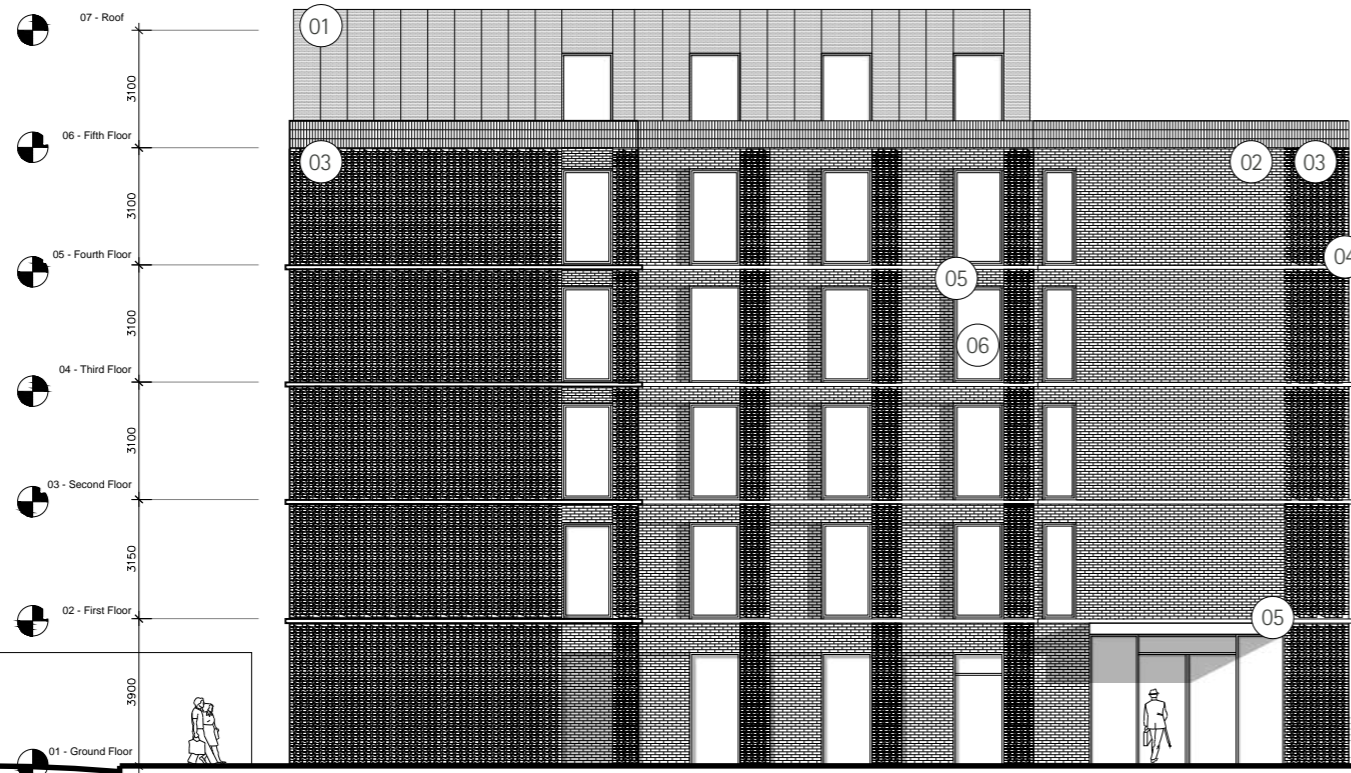
MATERIALS :

- 01 Brushed stainless steel rain screen cladding.
- 02 Engineer Brick - Petrol Blue, variation in tone.
- 03 Brick corbel pattern to piers.
- 04 Projecting pale white tone band, square profile.
- 05 Brushed rose gold , projecting window reveal/ window profile framing glazing to bedrooms.
- 06 Low emissivity, high performing glass.
- 07 Service door to be similar colour finish to brick.

Holiday Inn plant highlighted behind the proposed scheme.



Site impression -West facing elevation



Scale 1:200 – West facing elevation



Aros Architects
Jerwood Space
171 Union Street
London SE1 0LN

Telephone
+44(0)20 7928 2444
Facsimile
+44(0)20 7928 2450

Email
info@arosarchitects.com
Website
www.arosarchitects.com

Notes

1. All dimensions are to be verified by the Contractor on site, any discrepancies in this drawing are to be reported to Aros Ltd
2. The Contractor shall not vary any work shown on this drawing without prior approval in writing from Aros Ltd.
3. The Contractor shall supply a full set of shop drawings and specifications prior to commencement of work.
4. This drawing supersedes all previous issues of the same drawing number with an earlier revision suffix.
5. The Contractor shall immediately inform Aros Ltd of the effect upon the programme and costs of any alterations to the proposed works shown on this drawing.
6. This drawing is the copyright of Aros Ltd and the contents must not be disclosed to other parties without prior agreement.

Revisions

Rev	Date	Drawn	Checked	Description
-	XX.XX.XX	-	-	-

Project
London Southend Airport Hotel
Title
Proposed West Facing Elevation

Project No 6126	Drawing No (20) 403
Date November 2019	Scale 1:200 @ A3
Status Planning	Rev P3